



**ISISAH**  
ENDÜSTRİYEL

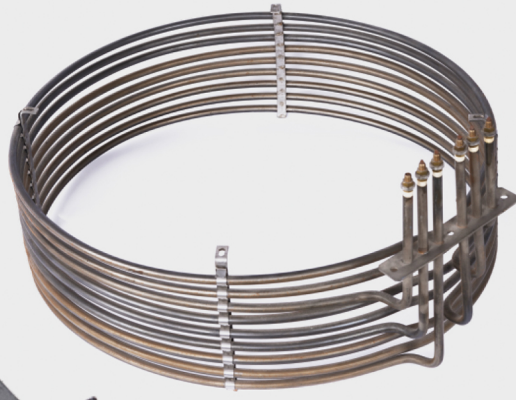
## ÜRÜN KATALOĞU

*Product Catalogue*



*Sektörde Dünya Markası | A World Brand In Sector*

**ENDÜSTRİYEL MUTFAK REZİSTANLARI**  
Industrial kitchen type heating elements



**IZGARA REZİSTANLARI**  
Grill heating elements



**BULAŞIK MAKİNASI REZİSTANLARI**  
Dishwasher Heating Elements



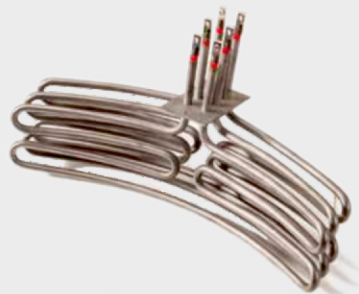
**ENDÜSTRİYEL MUTFAK REZİSTANLARI**  
Industrial kitchen type heating elements



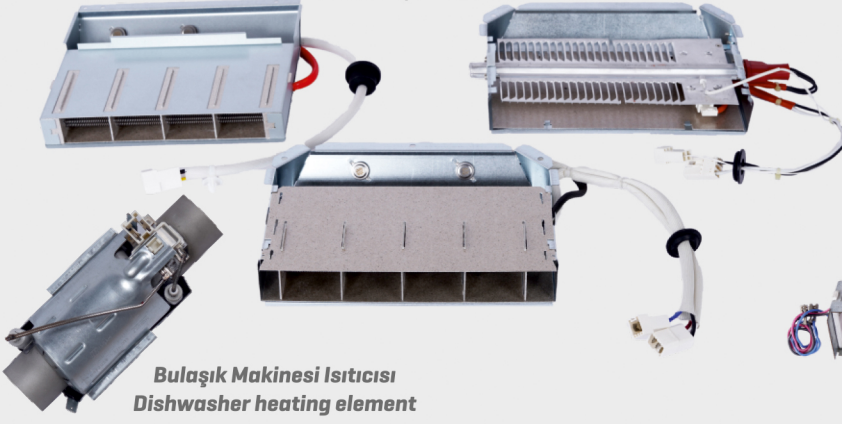
**MAKARNA HAŞLAMA REZİSTANLARI**  
Pasta Cooking Heating Elements



**DİĞER TİP REZİSTANLAR**  
Other Types Heating Elements



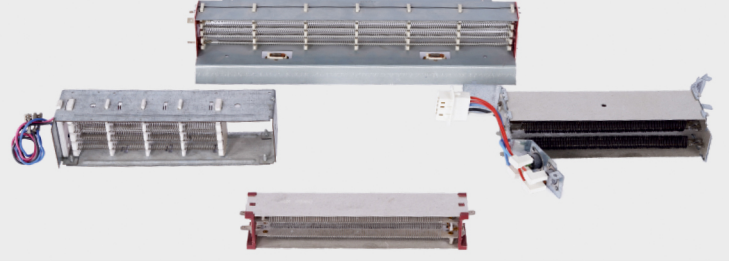
**Çamaşır Kurutma Mak. Isıtıcısı**  
**Tumble Dryer Heater**



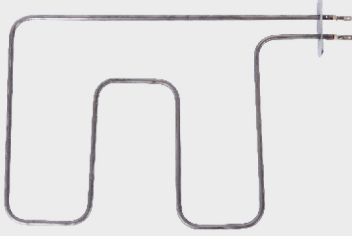
**Bulaşık Makinesi Isıtıcısı**  
**Dishwasher heating element**

**BEYAZ EŞYA**  
*Household Appliances*

**Kurutma Mak. Isıtıcıları**  
**Open Coil Heaters**



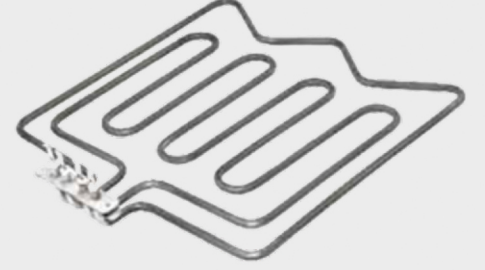
**Kahve-Çaydanlık-Bulaşık Mak. Isıtıcıları**  
**Coffee -Kettle -Dishwasher Heaters.**



**Fırın Rezistansı**  
**Oven Heating Element**



**Fırın Rezistansı**  
**Turbo Heating Element**



**Fırın Rezistansı**  
**Oven Heating Element**



**Kullanım Alanı**  
*Usage areas*

**DEFROST REZİSTANSLAR**  
*Defrost Heating Elements*

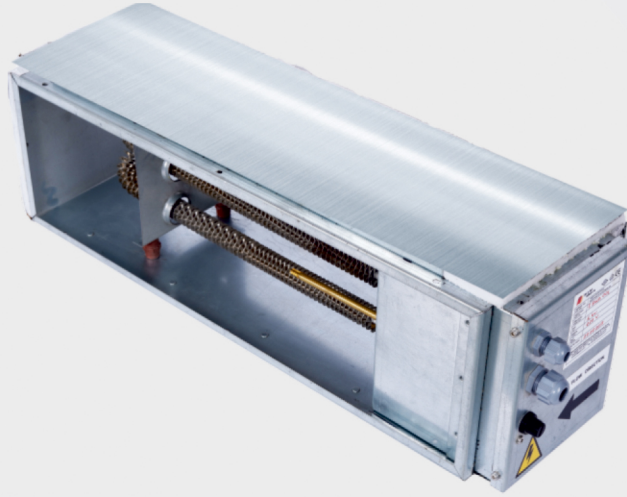
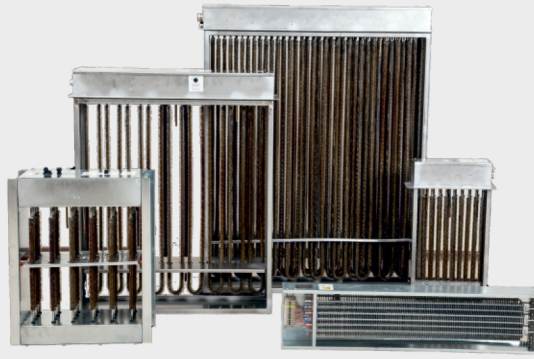
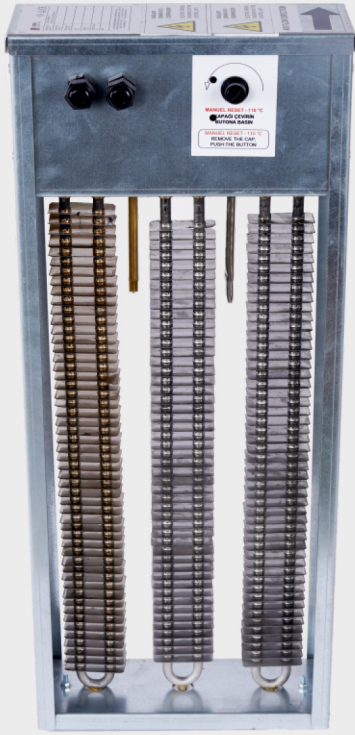


**TEKNİK ÖZELLİKLER / TECHNICAL FEATURES**

Isıtıcı Kesiti Element Cross-Section	Maksimum Uzunluk Max. Length	Minimum Uzunluk Min. Length	Kılıf Materyali Sheath Material
Ø=6,5 mm	6000 mm	300 mm	304 K, 321 K,
Ø=8,2 mm	6000 mm	300 mm	316K, Incoloy 800,
Ø=11,2 mm	6000 mm	300 mm	309K, 310K

## KANAL TİP ELEKTRİKLİ ISITICILAR

Duct Type Electrical Heaters

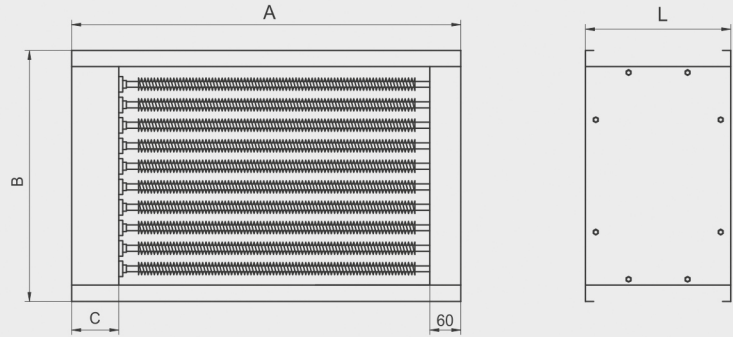


### Santral Tipi Elektrikli Isıtıcı

A : Min. 500 mm / Max. 6000 mm  
B : Min. 200 mm / Max. 3000 mm  
L : Min. 150 mm / Max. 1000 mm  
C : 80 mm standart / 400 mm kontrol ekipmanı var ise

### Central Type Electric Heaters

A : Min. 500 mm / Max. 6000 mm  
B : Min. 200 mm / Max. 3000 mm  
L : Min. 150 mm / Max. 1000 mm  
C : 80 mm standart / 400 mm if you have control equipment

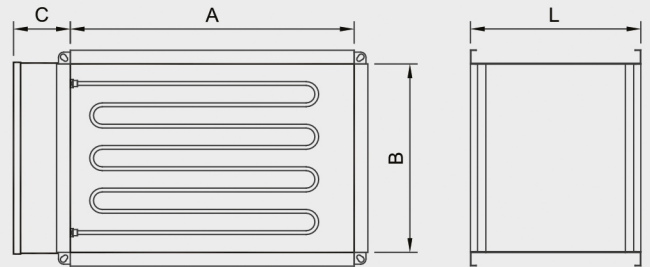


### Dikdörtgen Kanal Tipi Elektrikli Isıtıcı

A : Min. 200 mm / Max. 3000 mm  
B : Min. 200 mm / Max. 3000 mm  
L : Min. 150 mm / Max. 1000 mm  
C : 120 mm standart / 500 mm kontrol ekipmanı var ise

### Rectangular Duct Type Electric Heater

A : Min. 200 mm / Max. 3000 mm  
B : Min. 200 mm / Max. 3000 mm  
L : Min. 150 mm / Max. 1000 mm  
C : 120 mm standart / 500 mm if you have control equipment

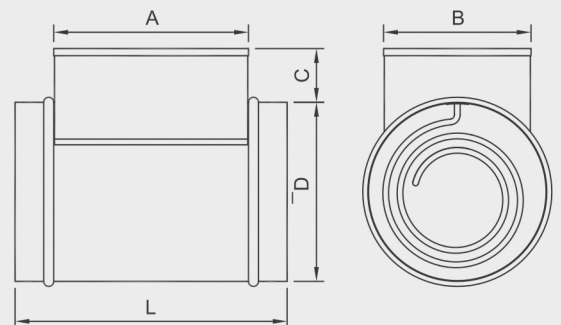


### Yuvarlak Kanal Tipi Elektrikli Isıtıcı

ØD : Min. 100 mm / Max. 500 mm  
L : 380 mm Standart / 1000 mm kontrol ekipmanı var ise  
A : Min. 275 mm / Max. 860 mm  
B : 200 mm standart  
C : 75 mm standart / 200 mm kontrol ekipmanı var ise

### Circular Duct Type Electrical Heater

ØD : Min. 100 mm / Max. 500 mm  
L : 380 mm Standart / 1000 mm if you have control equipment  
A : Min. 275 mm / Max. 860 mm  
B : 200 mm standart  
C : 75 mm standart / 200 mm if you have control equipment



# DEMİRYOLLARI ISITICILARI

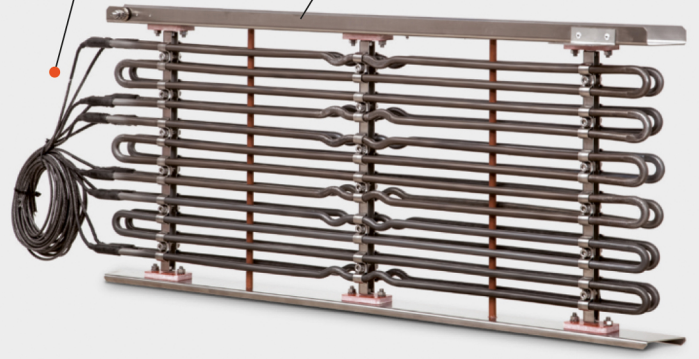
Railway Heaters



2015-16

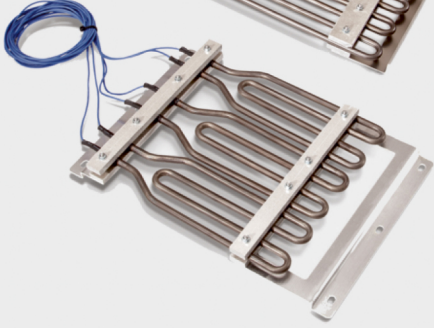
Tüvasaş Projesi  
Tüvasaş Project

6 Elemanlı 6 Element 11.5KW-380V



2015-16

Görevli Personel Isıtıcıları  
Staff Heaters



9 Elemanlı 9 Element 9KW-750V



2015-16

Yazkar 900 İstanbul Ulaşım Projesi  
Yazkar 900 İstanbul Transportation Project



6 Elemanlı 6 Element 11.5KW-380V

2016-17

Yazkar 850 İBB Projesi  
Yazkar 850 İBB Project



1300 W - 380 V



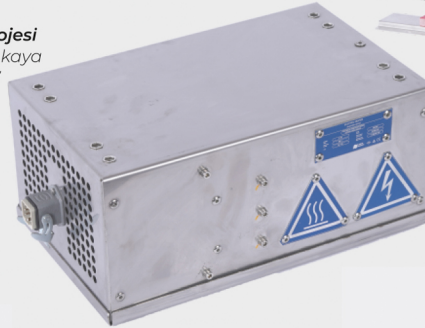
2014

Ankara Metro Projesi  
Ankara Metro Project



2021-2022

Romanya Bozankaya Projesi  
Romania Project Of Bozankaya  
3Element 2KW-380V



2021-2022

Romanya Bozankaya Projesi  
Romania Project Of Bozankaya.  
9Elemanlı 18KW-400V 9Element 18KW-400V



2011

Makas Isıtıcıları  
Switch Point Heaters



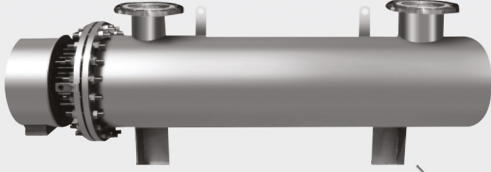
2011

Görevli Personel Isıtıcıları  
Staff Heaters



## MÜHENDİSLİK PROJELERİ

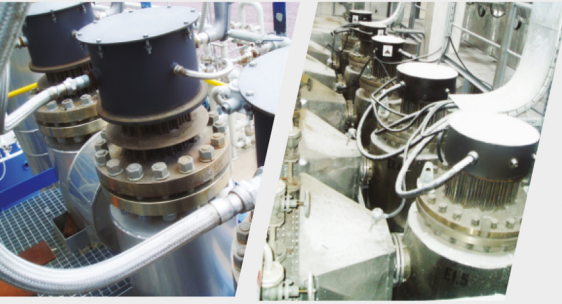
Engineering Projects



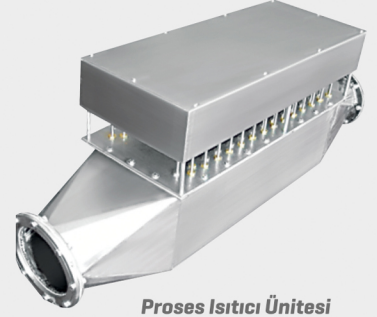
**Endüstriyel Fırın**  
Industrial oven



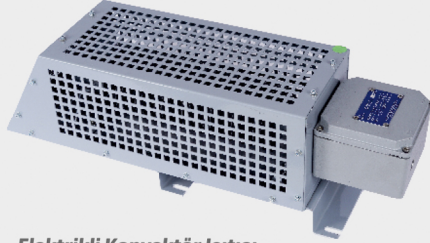
**Çekmeceli Bekleme Düzey Fırını**  
Standby industrial oven



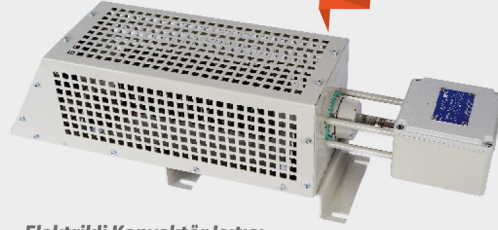
**BOYKUR**  
Paint Dryer  
PATENT NO: 2010/00889



**Proses Isıtıcı Ünitesi**  
Process heater unit



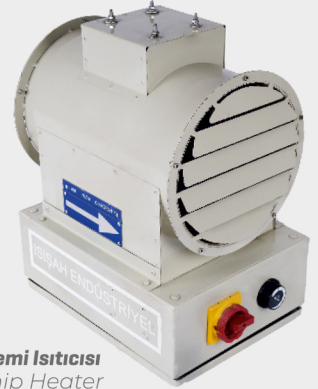
**Elektrikli Konvektör Isıtıcı**  
Electric Convector Heater



**Elektrikli Konvektör Isıtıcı**  
Electric Convector Heater

## SAVUNMA SANAYİ PROJELERİ

defense industry projects



**Fanlı Gemi Isıtıcısı**  
Fan Ship Heater

## MOBİL ELEKTRİKLİ ISITICILAR

Mobile Electric Heaters

## Fanlı Isıtıcılar

Fan Heaters



**Ayak Isıtıcısı**  
Foot Heater

## U SERİSİ TEKNİK ÖZELLİKLER / U SERIES TECHNICAL FEATURES

Isıtıcı Tipi / Heater Type	U1	U2	U3	U4	U5
Gerilim / Voltage (V)	230	230	380	380	380
Güç / Power (W)	3	4,6	9	12 / 15	22 / 25 / 30
Güç Kademesi / Power Stage	0-1,5-3	0-2,3-4,6	0-4,5-9	0-6-12 0-7,5-15	0-11-22 0-12,5-25 0-15-30
Isıtma Performansı (kcal) / Heating Performance	2580	3956	7740	10320 / 12900	18920 / 21500 25800
Akım / Current (A)	13	20	13,7	18,25 / 2,8	33,5 / 38 / 45,65
Debi / Air Flow (m³/h)	270	400	715	900 / 1075	1360 / 1480 / 1600
Gürültü Seviyesi (dB) / Sound Level	55	55	57	58 / 60	63 / 65 / 67
Sıcaklık Artışı (°C) / Temp. rise through heater	30	32	35	37 / 39	45 / 47 / 52
Koruma / Degree of protection	IP44	IP44	IP44	IP44	IP44
Fan Devri (R.P.M.) / Motor Speed	1350	1350	1350	985	1450
Ağırlık / Weight (kg)	9	11	15	24	35 / 35 / 42
Genişlik / Width (mm)	300	360	360	455	455
Yükseklik / Height (mm)	485	565	565	700	700
Derinlik / Depth (mm)	300	400	355	480	480

**Kömüryak**  
Coal igniter





[www.isisahgroup.com.tr](http://www.isisahgroup.com.tr)



[www.borsah.com.tr](http://www.borsah.com.tr)



[www.isisah.com.tr](http://www.isisah.com.tr)



[www.salmex.com.tr](http://www.salmex.com.tr)